

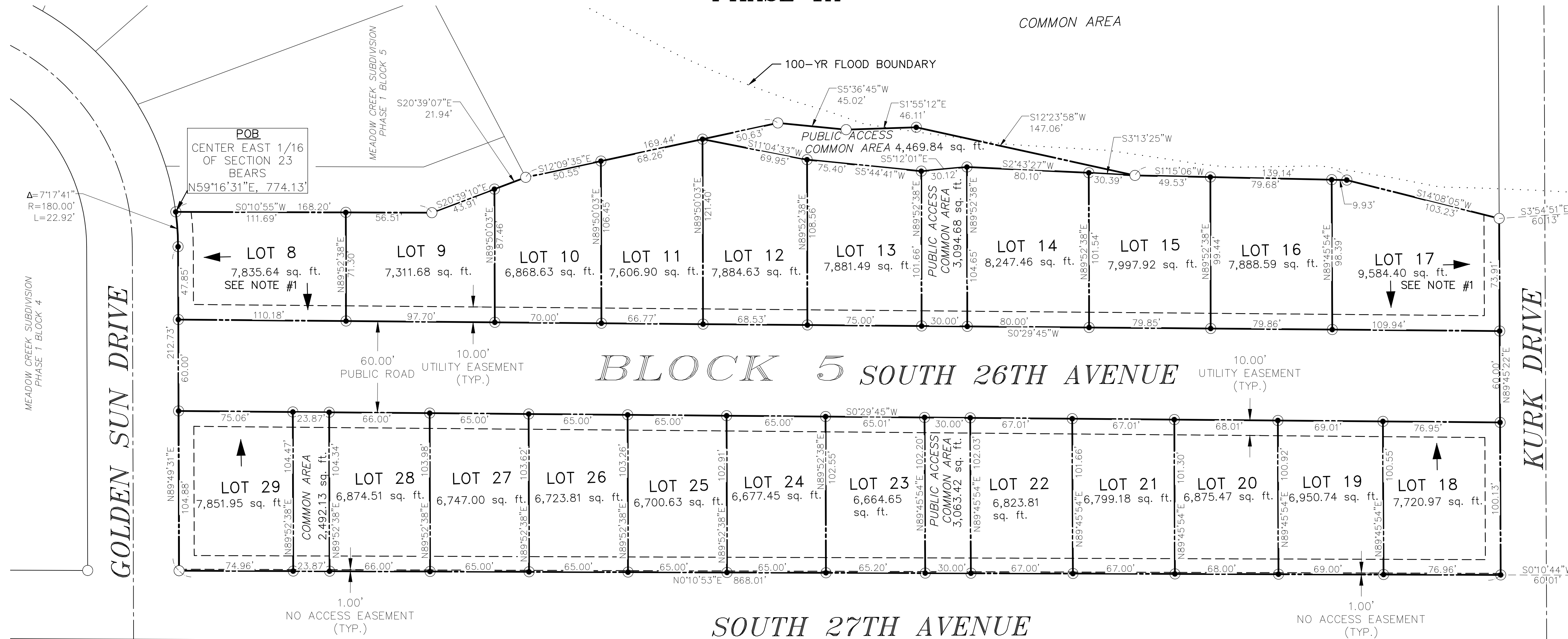
**FINAL PLAT OF THE
MEADOW CREEK SUBDIVISION, PHASE 1A & 1B
AMENDED PLAT OF LOTS 8-15, BLOCK 5 & LOTS 14-18, BLOCK 9,
MEADOW CREEK SUBDIVISION PHASE 1 GALLATIN COUNTY, MONTANA
SITUATED IN A PORTION OF THE SE 1/4 SECTION 23, T2S, R5E, P.M.M.**

PURPOSE OF SURVEY: TO CREATE PARCELS FOR DEVELOPMENT.

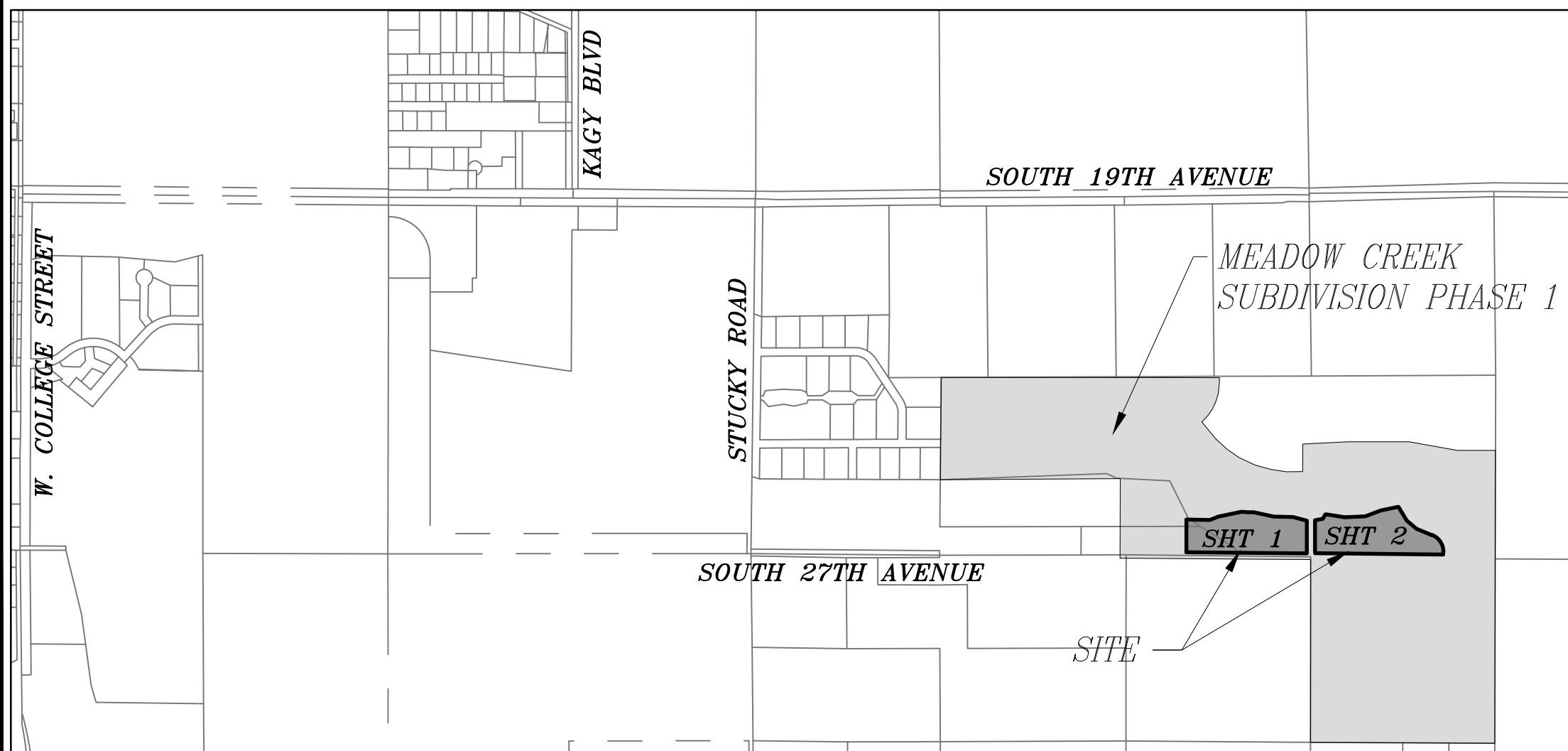
PHASE 1A

LEGEND

- 1/2" REBAR AND PLASTIC CAP, SET FOR THIS SURVEY MARKED "REED 28997-LS"
- REBAR WITH YELLOW PLASTIC CAP "ENG-INC"
- ← INDICATES BUILDING ORIENTATION FOR CORNER LOTS

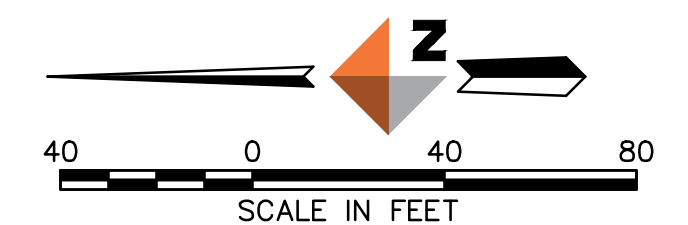


LOCATION MAP

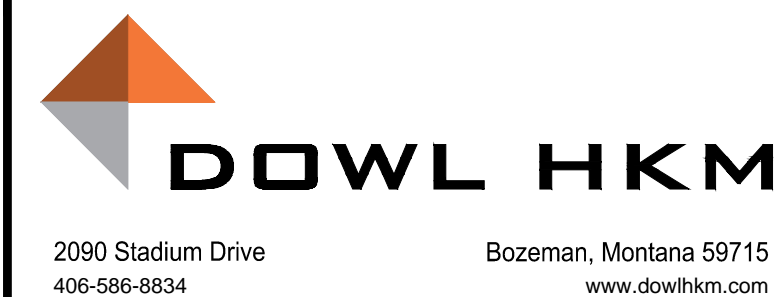


NOTES

1. SEE CORNER LOT NOTE ON SHEET 4 OF 4.



REVISIONS			
REV	DATE	DESCRIPTION	BY



MEADOW CREEK SUBDIVISION
BOZEMAN, MONTANA
FINAL PLAT
MEADOW CREEK SUBDIVISION, PHASE 1A & AB

SE1/4 SECTION 23, T2S, R5E, P.M.M., GALLATIN COUNTY

PROJECT	22.11252.01
DATE	8/19/2014
SHEET	1
OF	4

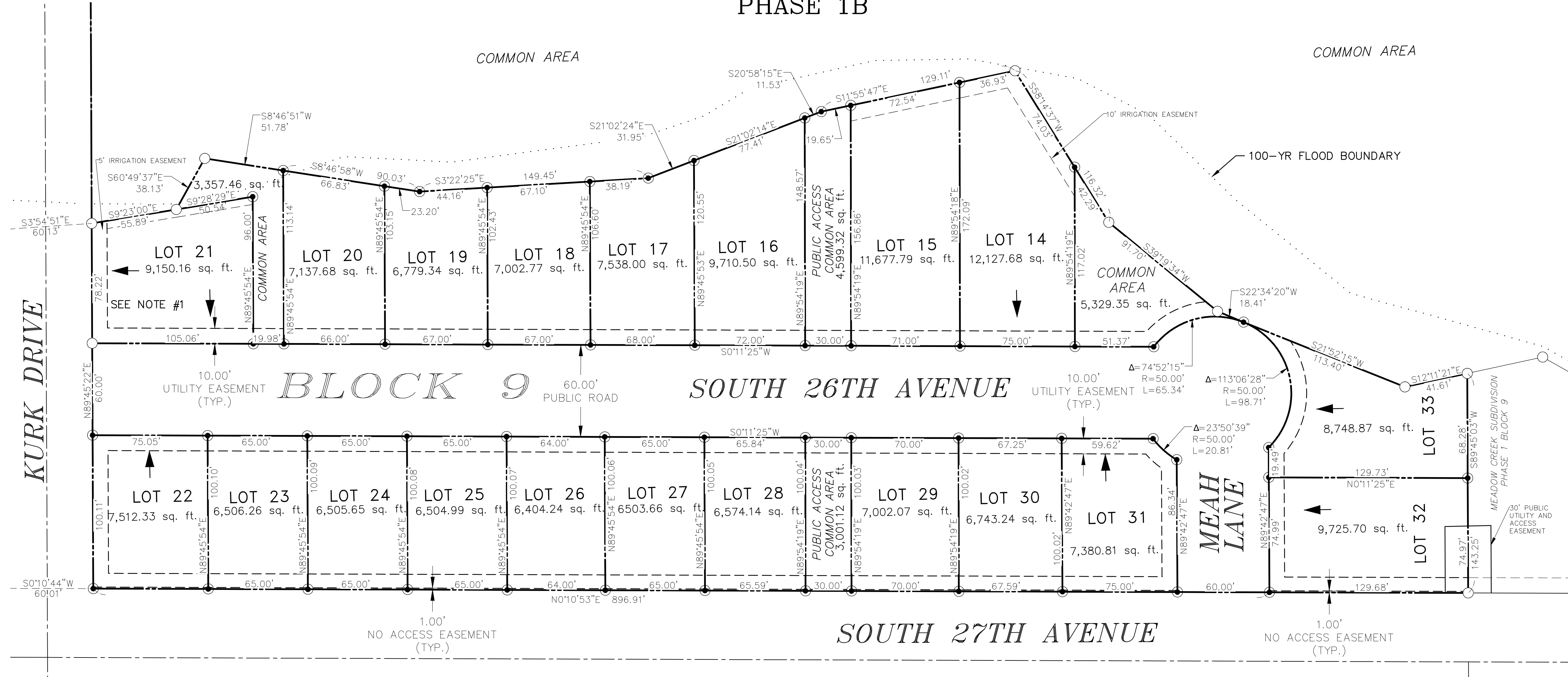
G:\22\11252\01\CAD\Existing\MCI2-VF-PL-FINAL PLAT-11252-01.dwg PLOT DATE 2014-09-11 14:25 SAVED DATE 2014-09-11 14:21 USER: bduffey

FINAL PLAT OF THE
MEADOW CREEK SUBDIVISION, PHASE 1A & 1B
AMENDED PLAT OF LOTS 8-15, BLOCK 5 & LOTS 14-18, BLOCK 9,
MEADOW CREEK SUBDIVISION PHASE 1 GALLATIN COUNTY, MONTANA
SITUATED IN A PORTION OF THE SE 1/4 SECTION 23, T2S, R5E, P.M.M.

PURPOSE OF SURVEY: TO CREATE PARCELS FOR DEVELOPMENT.

PHASE 1B

- LEGEND**
- 1/2" REBAR AND PLASTIC CAP, SET FOR THIS SURVEY MARKED "REED 28997-LS"
 - REBAR WITH YELLOW PLASTIC CAP "ENG-INC"
 - ← INDICATES BUILDING ORIENTATION FOR CORNER LOTS

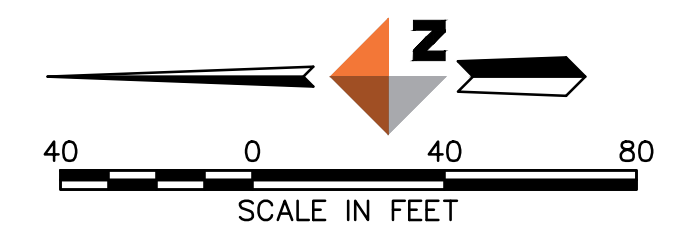


PLAT STATISTICS SUMMARY

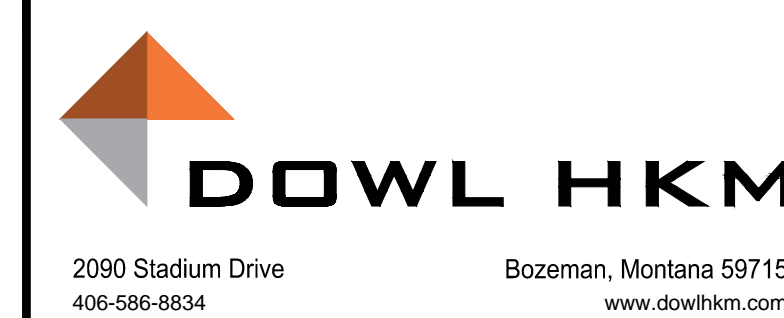
BLOCK 1	SINGLE FAMILY: LOTS 1-10	79,107.34 SQ. FT.	1.816 AC.
BLOCK 2	SINGLE FAMILY: LOTS 1-12	83,410.17 SQ. FT.	1.915 AC.
BLOCK 3	SINGLE FAMILY: LOTS 1-8	71,123.92 SQ. FT.	1.633 AC.
BLOCK 4	SINGLE FAMILY: LOTS 1-12	86,111.96 SQ. FT.	1.977 AC.
COMMON OPEN SPACE	PUBLIC COMMON AREA	29,407.25 SQ. FT.	0.675 AC.
STREETS		106,052.33 SQ. FT.	2.435 AC.
GROSS AREA		455,210.41 SQ. FT.	10.450 AC.

NOTES

1. SEE CORNER LOT NOTE ON SHEET 4 OF 4.



REVISIONS			
REV	DATE	DESCRIPTION	BY



MEADOW CREEK SUBDIVISION
BOZEMAN, MONTANA
FINAL PLAT
MEADOW CREEK SUBDIVISION, PHASE 1A & 1B

SE1/4 SECTION 23, T2S, R5E, P.M.M., GALLATIN COUNTY

PROJECT	22.11252.01
DATE	8/19/2014
SHEET	2
OF	4

G:\22\11252\01\CAD\Existing\MCI2-VF-PL-FINAL PLAT-11252-01.dwg PLOT DATE 2014-09-11 14:25 SAVED DATE 2014-09-11 14:21 USER: bduffey